















	X 4		X 8
	X 4		X 4
	X 4		X 4
	X 1		X 8
	X 1		X 4

	X 1		X 4
	X 4		X 4
			X 2

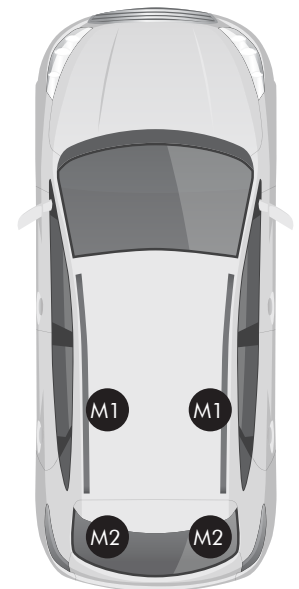


			
---	---	---	---

M1	M2
----	----

Brand	Model	Doors	Year Range
BMW	Serie 1 E87	5	04>11
BMW	Serie 1 E81	3	08>11
BMW	Serie 1 F20	5	15>19
BMW	Serie 1 F20	5	11>15
BMW	Serie 3 E46	4	98>05
BMW	Serie 3 E90	4	05>12
BMW	Serie 3 E90	4	12>13
BMW	Serie 3 E92	2	05>13
BMW	Serie 3 Touring E91	5	05>11
BMW	Serie 5 E39	4	96>02
CITROEN	C4	5	04>09
CITROEN	C4 Picasso (Mk1)	5	06>13
CITROEN	C5 (Mk2)	4	08>17
FIAT	Idea	5	05>12
FIAT	Panda	5	15>
FIAT	Panda III	5	15>
FIAT	Stilo	3-5	01>10
FORD	Focus II	3-5	05>10
FORD	Focus II SW	5	04>10
FORD	C-MAX	5	03>10
FORD	S-MAX	5	03>15
KIA	Cee'D	5	18>
KIA	Pro Cee'D	4	18>
LANCIA	Lybra SW	5	99>05
LANCIA	Musa	5	04>12
MAZDA	2	5	07>14
MAZDA	Cx-5	5	12>15
MERCEDES	Classe A W169	5	04>07
MERCEDES	Classe A W169 Restyling	5	08>12
MERCEDES	Classe B W245	5	05>11
MERCEDES	Classe E W 211	4	02>09
MITSUBISHI	ASX	5	10>
MITSUBISHI	Lancer VII	4	93>00
OPEL	Astra H	5	04>09
OPEL	Astra H SW	5	08>16
OPEL	Zafira B	5	04>11
PEUGEOT	307	3-5	01>09
RENAULT	Megane II	5	02>08
RENAULT	Scenic II	5	03>08
RENAULT	Grand Scenic II 7 posti	5	04>08
SAAB	9-3	4	02>13
SAAB	9-3 SW	5	02>08
SUBARU	Levorg	5	14>
SUBARU	Xv	5	12>17

Brand	Model	M1	M2
BMW	Serie 1 E87	10,2	8,5
BMW	Serie 1 E81	10,2	8,5
BMW	Serie 1 F20	9,9	7,9
BMW	Serie 1 F20	9,1	7,0
BMW	Serie 3 E46	8,4	8,0
BMW	Serie 3 E90	11,4	11,4
BMW	Serie 3 E90	11,5	10,7
BMW	Serie 3 E92	10,0	10,9
BMW	Serie 3 Touring E91	11,5	11,1
BMW	Serie 5 E39	10,3	8,8
CITROEN	C4	9,1	5,7
CITROEN	C4 Picasso (Mk1)	5,4	2,4
CITROEN	C5 (Mk2)	11,9	9,1
FIAT	Idea	11,6	7,6
FIAT	Panda	7,9	5,7
FIAT	Panda III	7,9	5,7
FIAT	Stilo	13,8	10,1
FORD	Focus II	11,6	10,9
FORD	Focus II SW	11,6	9,6
FORD	C-MAX	12,4	10,3
FORD	S-MAX	10,2	8,5
KIA	Cee'D	11,4	7,3
KIA	Pro Cee'D	11,9	7,6
LANCIA	Lybra SW	5,7	5,6
LANCIA	Musa	12,4	8,2
MAZDA	2	7,7	3,7
MAZDA	Cx-5	11,9	9,1
MERCEDES	Classe A W169	13,1	8,0
MERCEDES	Classe A W169 Restyling	12,4	7,6
MERCEDES	Classe B W245	12,1	6,7
MERCEDES	Classe E W 211	13,3	11,1
MITSUBISHI	ASX	13,3	11,1
MITSUBISHI	Lancer VII	10,2	8,5
OPEL	Astra H	7,9	6,6
OPEL	Astra H SW	7,9	6,6
OPEL	Zafira B	11,8	9,6
PEUGEOT	307	11,2	8,2
RENAULT	Megane II	9,2	8,4
RENAULT	Scenic II	10,9	10,9
RENAULT	Grand Scenic II 7 posti	11,5	11,0
SAAB	9-3	14,1	12,6
SAAB	9-3 SW	11,9	7,9
SUBARU	Levorg	13,5	10,6
SUBARU	Xv	13,6	10,6



Le tabelle di applicabilità sono soggette ad invecchiamento e/o modifiche, in caso di dubbio si consiglia di consultare il sito www.k39.it costantemente aggiornato.

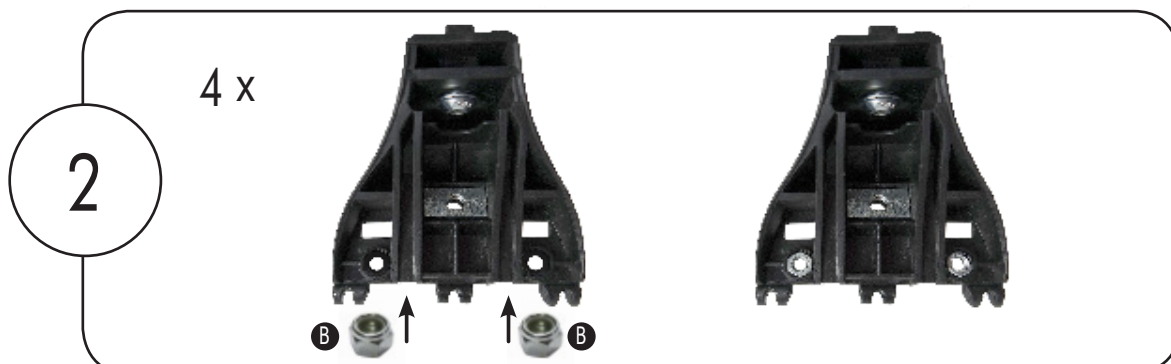
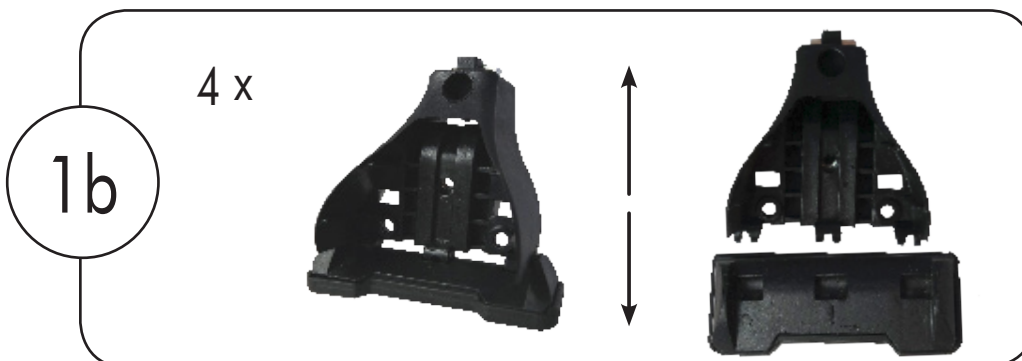
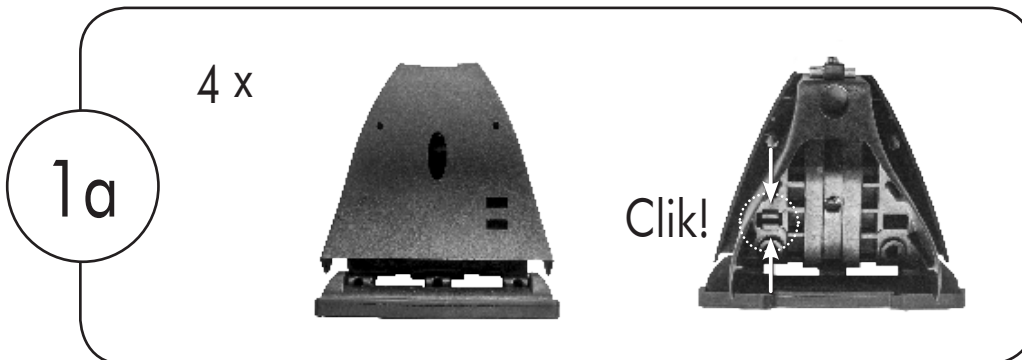
The applicability tables are subject to aging and/or changes, in case of doubt it is advisable to consult the constantly updated website www.k39.it.

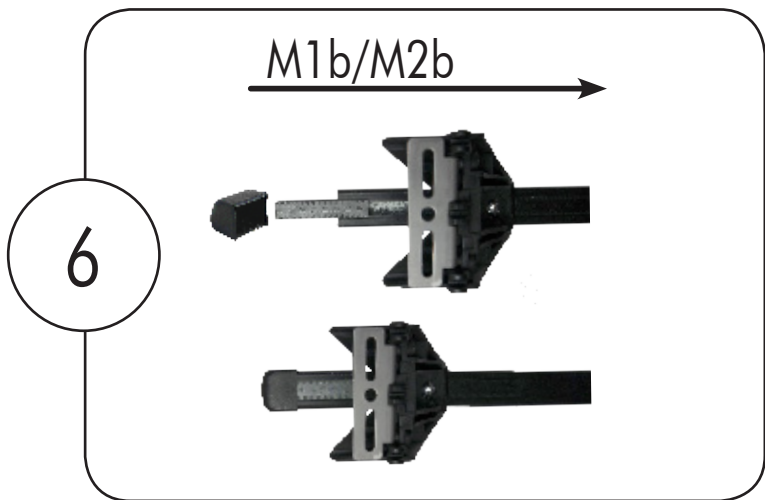
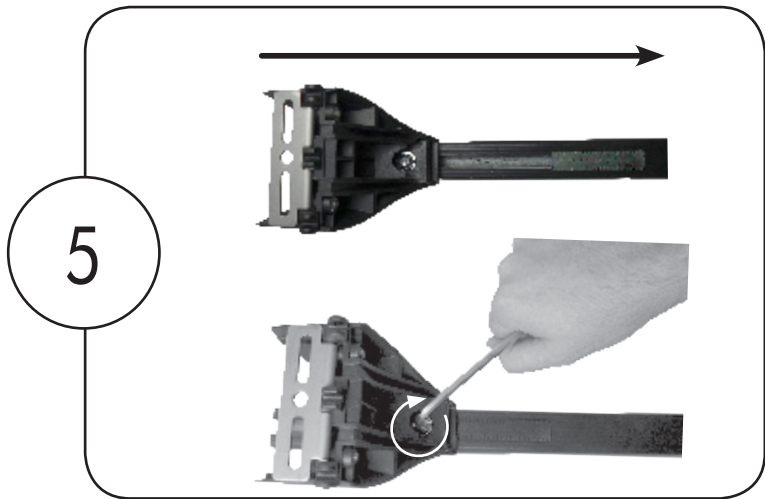
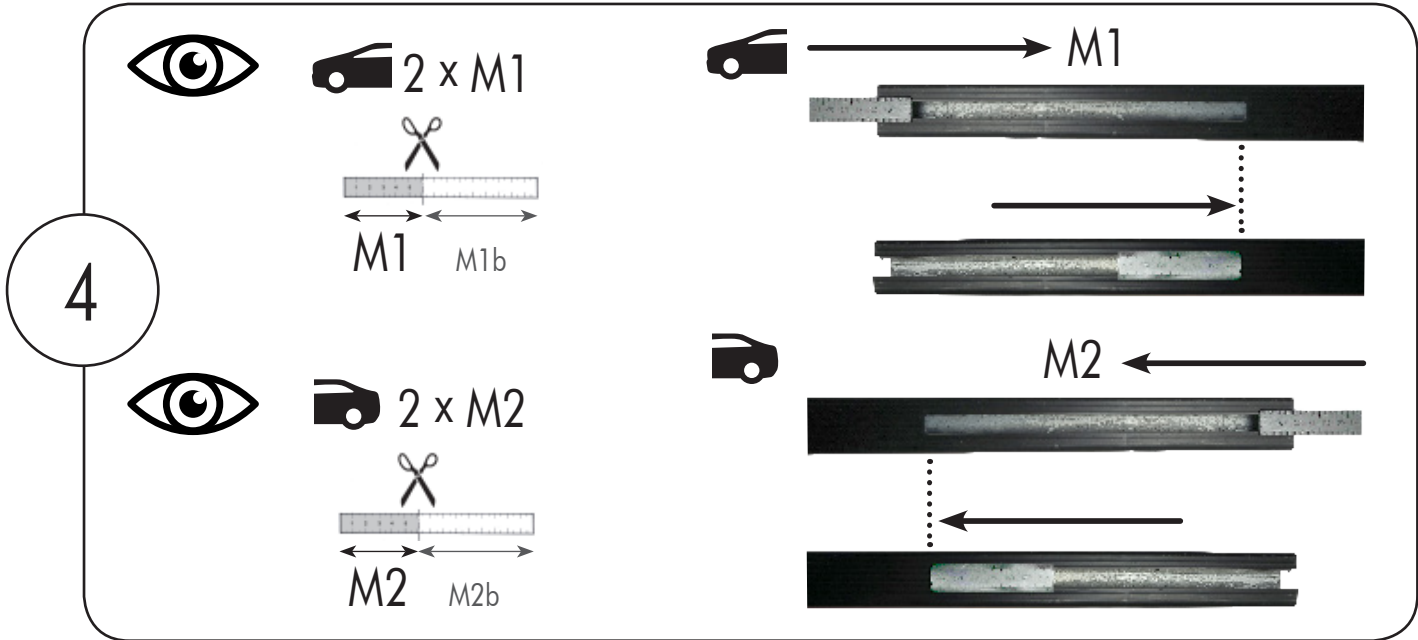
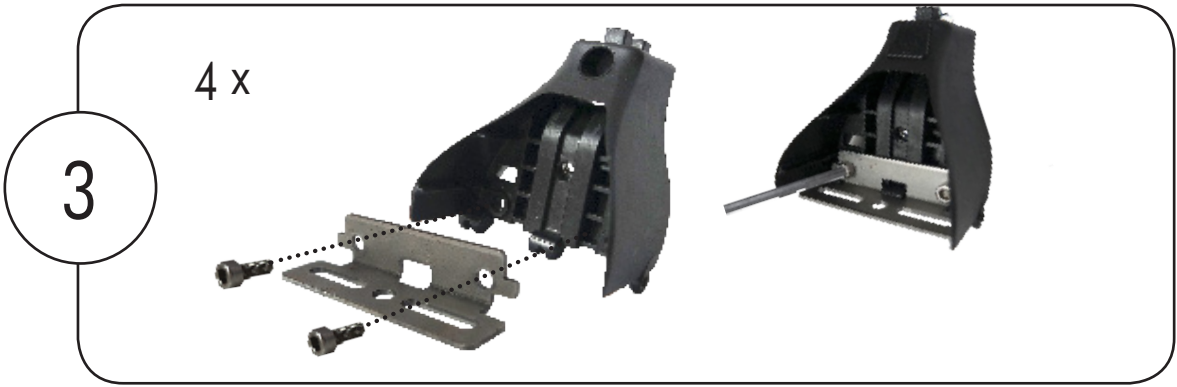
			M1	M2	M3	M4	M5
CITROEN	Jumpy	94>07	3,0	2,7	2,7	2,7	2,2
CITROEN	Nemo	08>13	9,9	7,2	5,1		
CITROEN	Nemo Van	08>13	9,9	7,2	5,1		
FIAT	Doblò (con giraffone)	00>10	3,3	4,9			
FIAT	Doblò (senza giraffone)	00>10	3,3	4,9	3,5		
FIAT	Doblò II	10>15	6,7	5,3	3,5		
FIAT	Doblò II	15>	7,7	7,1	7,3		
FIAT	Doblò Maxi	10>15	7,3	6,5	6,5	3,3	
FIAT	Doblò maxi	15>	7,7	7,1	7,3		
FIAT	Fiorino II (con giraffone)	94>08	3,3	2,8			
FIAT	Fiorino II (senza giraffone)	94>08	3,3	2,8	1,8		
FIAT	Fiorino III	08>	9,9	7,2	5,1		
FIAT	Qubo	08>	9,9	7,2	5,1		
FORD	Connect transit I	02>13	1,5	1,5			
OPEL	Combo Tour	12>18	6,7	5,3	3,5		
OPEL	Combo Van	12>18	6,7	5,3	3,5		
OPEL	Combo Van (passo lungo)	12>18	7,3	6,5	6,5	3,3	
OPEL	Combo (D)	14>18	7,0		6,5		6,5
PEUGEOT	Bipper	08>	9,9	7,2	5,1		
PEUGEOT	Expert	>06	3,0	2,7	2,7	2,7	2,2
PEUGEOT	Partner Tepee	08>18	9,9	7,2	5,1		



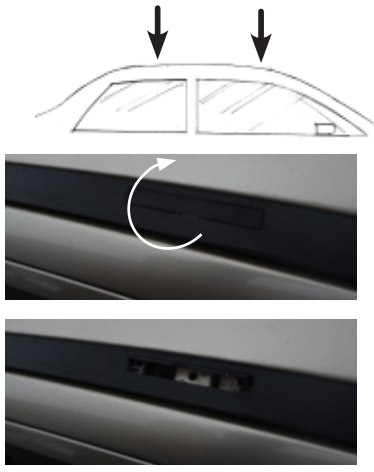
Le tabelle di applicabilità sono soggette ad invecchiamento e/o modifiche, in caso di dubbio si consiglia di consultare il sito www.k39.it costantemente aggiornato.

The applicability tables are subject to aging and/or changes, in case of doubt it is advisable to consult the constantly updated website www.k39.it.





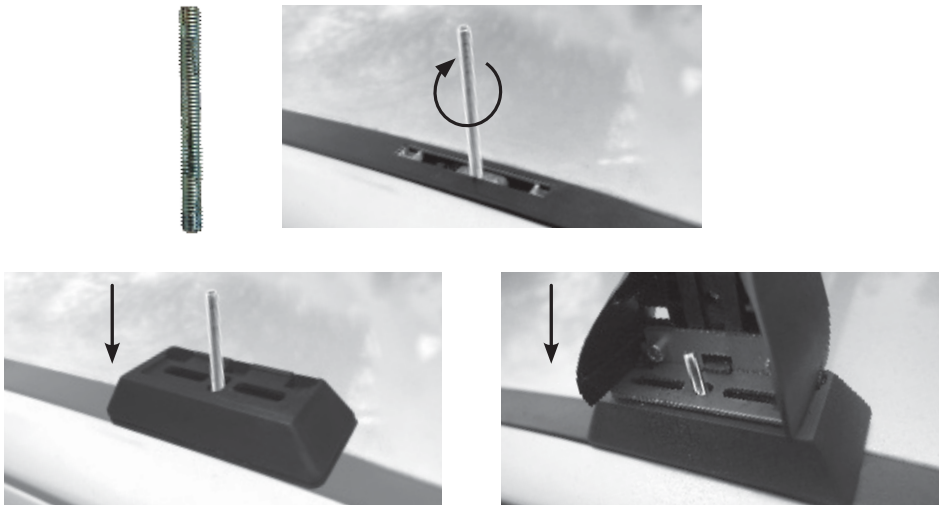
7



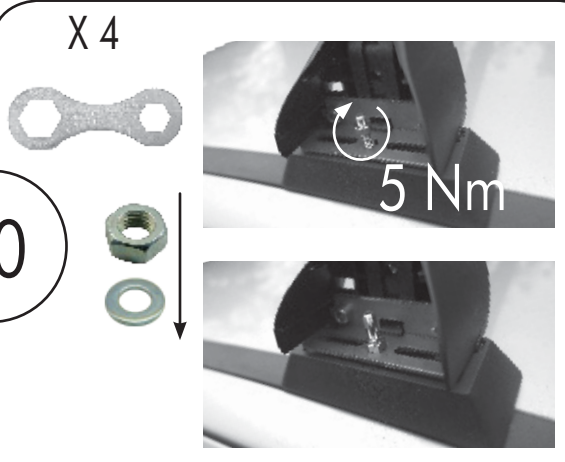
8



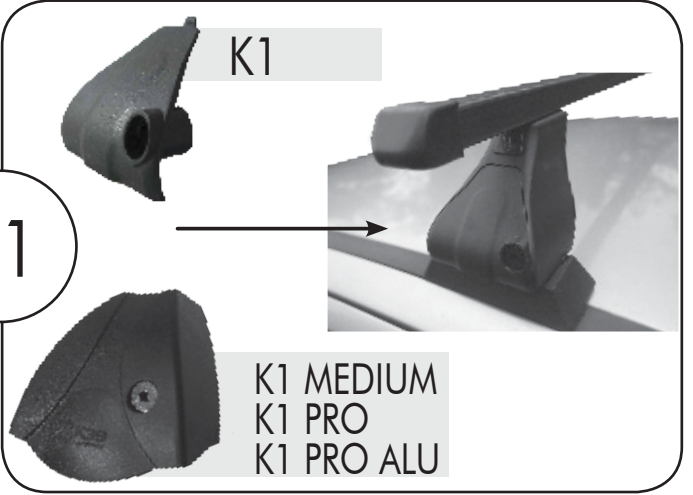
9



10



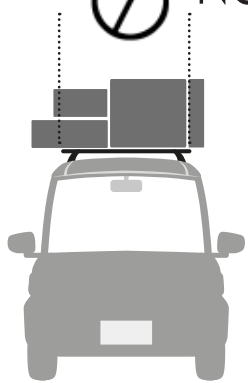
11



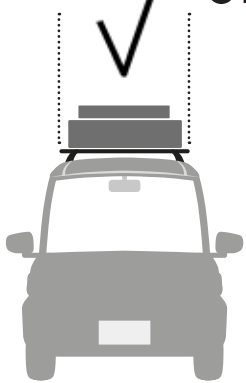
MAX
75 kg



NO



OK



NO

